

R 2 / R 3 / R 4 / R 4 V.V.

Consignes de sécurité et d' utilisation / Safety and Operating Instructions
 Veiligheidsvoorschriften en gebruiksaanwijzing / Sicherheits- und Bedienungshinweise

À fixer au mur.
 Hang on the wall.
 Aan de wand te bevestigen.
 An der Wand zu befestigen.

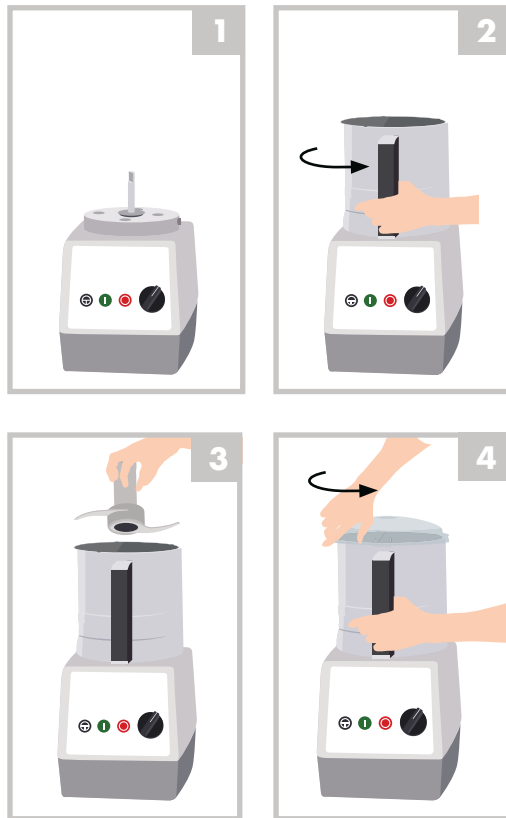


robot coupe®
 www.robot-coupe.com

Tableau de commande / Control Panel Bedieningspaneel / Bedienfeld

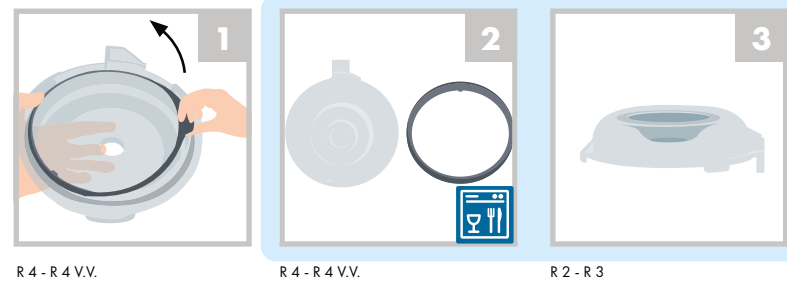


Mise en marche et utilisation / Switching on and using Inwerkingstelling en gebruik / Inbetriebnahme und Bedienung

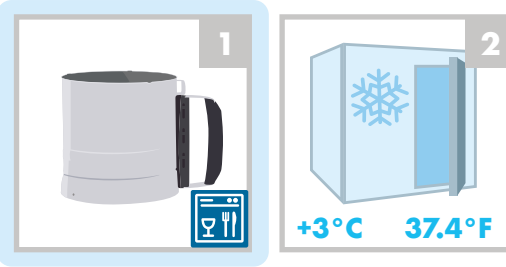


Nettoyage & entretien / Cleaning & maintenance Reiniging & onderhoud / Reinigung & Wartung

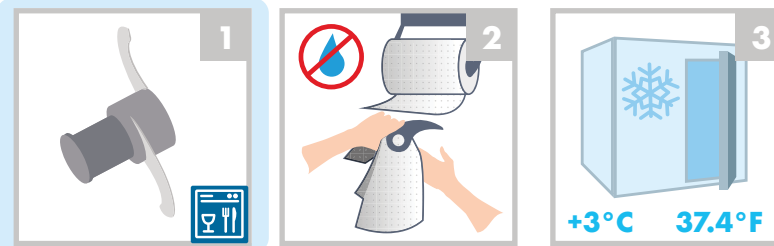
Couvercle / Lid / Deksel / Deckel



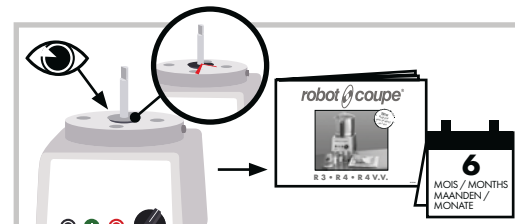
Cuve / bowl / schüssel



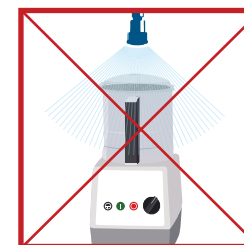
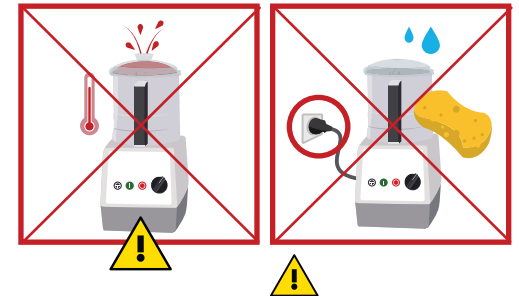
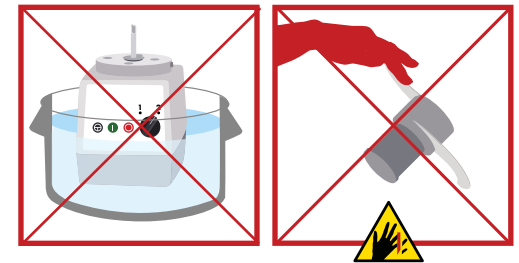
Couteau / Blade / Mes / Messer



Bague d'étanchéité / O-ring (seal) / Afdichtingsring / Dichtungsring



Avertissements et sécurité Safety and Warnings Waarschuwingen en veiligheid Warn- und Sicherheitshinweise



Ne jamais essayer de supprimer les systèmes de verrouillage et de sécurité.
 Never try to remove the locking- en beveiligingsystemen buiten werking te stellen.
 Niemals versuchen, die Verriegelungs- oder Sicherheitsvorrichtungen zu umgehen.

R 2 / R 3 / R 4 / R 4 V.V.

Consignas de seguridad y empleo / Instruções de segurança e de utilização
Istruzioni di sicurezza e di utilizzo / Рекомендации по технике безопасности и использованию

Debe fijarse a la pared.
Para fixar na parede
Da fissare a parete
Повесить на стену



robot coupe®

www.robot-coupe.com

Panel de mandos / Pannel de controlo / Quadro comandi / Панель управления



Botón Parada
Botão Desligar
Pulsante arresto
Кнопка «Стоп»



Botón Marcha
Botão Ligar
Pulsante ascensão
Кнопка «Пуск»



Botón Pulse
Botão Pulse
Pulsante impulsi
Кнопка «Пульс»

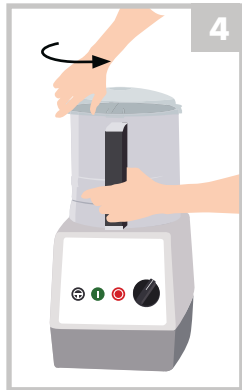
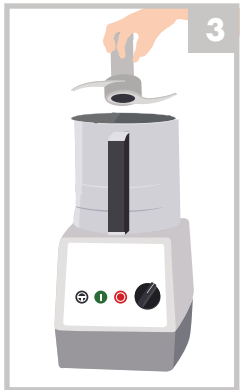
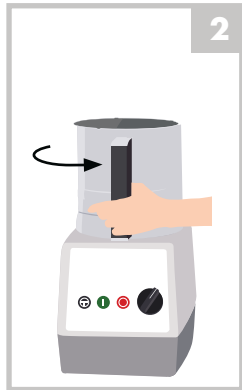


R 4
Selector de velocidad
Seletor de velocidade
Selettore di velocità
Переключатель скорости



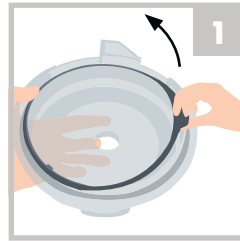
R 4 V.V.
Variador de velocidades
Variador de velocidade
Variatore di velocità
Регулятор скорости

Puesta en marcha y utilización / Ligação e utilização / Accensione e utilizzo / Включение и использование

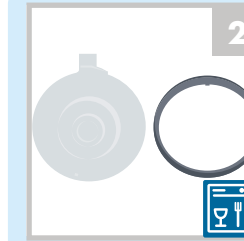


Limpieza y mantenimiento / Limpeza e manutenção / Pulizia e manutenzione / Чистка и уход

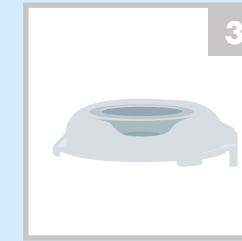
Tapa / Tapa / Coperchio / Крышка



R 4 - R 4 V.V.

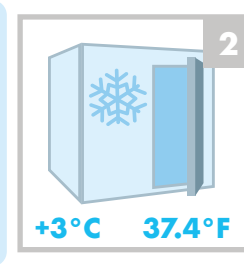


R 4 - R 4 V.V.

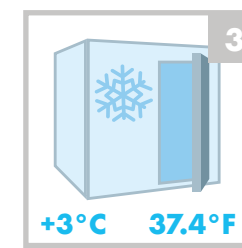
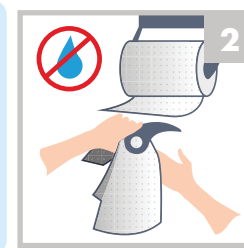
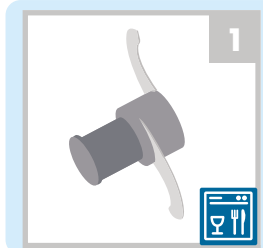


R 2 - R 3

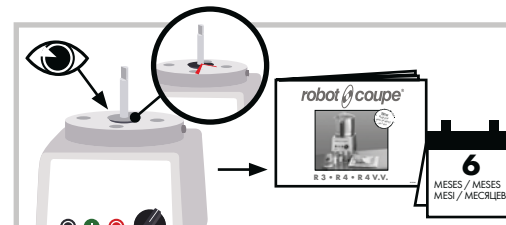
Cuba / Cuba / Vasca / Чаша



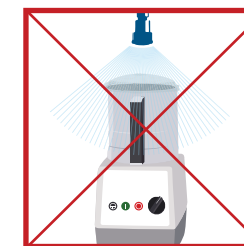
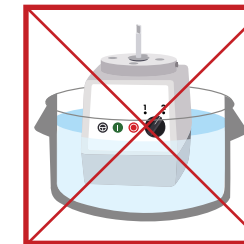
Cuchilla / Lâmina / Coltello / Нож



Anillo de hermeticidad / Anel de vedação / Anello di tenuta / Уплотнительное кольцо



Advertencia y seguridad / Advertência e segurança / Avvertenze e sicurezza / Предупреждения по безопасному использованию



Nunca tratar de suprimir los sistemas de bloqueo y de seguridad.
Nunca tentar suprimir os sistemas de bloqueio e de segurança.
Non cercare in alcun caso di eliminare i sistemi di blocco di sicurezza.
Никогда не отключать системы блокировки и защиты.